

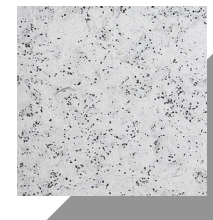


ARCHITECTURAL PANEL SOLUTIONS

UCONN

 Petrarch

## PETRARCH ENGINEERED STONE CLADDING



Dover Smooth Matte

'The University of Connecticut (UConn) is a top-ranked public research institution with campuses across Connecticut. Its mission is to embrace diversity and cultivate leadership, integrity, and engaged citizenship in students, faculty, staff, and alumni. In order to bring this vision to life and to channel the spirit of 'innovation', UConn selected JCJ Architecture and Moody Nolan to design its new Student Recreation Centre.'

### Education sector cladding - the selection process

Education sector projects often pose a challenge when it comes to façade selection, with a stringent 'must-have' tick-list and usually tight budgets to adhere to. The University of Connecticut's Recreation Centre was no exception. Petrarch's appealing reconstituted stone aesthetic, intrinsic fire-resistant qualities (A2, s1-d0 according to EN 13501-1), durability and its easy installation, were just some of the reasons why it was chosen.

The Student Recreation Centre has been recognised as an Outstanding Facility of Merit in the 2021 NIRSA Awards.

### Key Project Details

**Client:** University of Connecticut

**Distributor:** Omnis Panels

**Colour:** Petrarch - Dover Smooth Matte

**Location:** Connecticut, USA

**Architects:** JCJ Architecture & Moody Nolan

**Contractor:** Greenwood Industries

**Project type:** Education sector cladding \$72.5 Million

**Size:** 19,750m<sup>2</sup>